



MIDLANDS  
mentoring  
partnership



# ANNUAL REPORT

FOR THE YEAR ENDING JUNE 30, 2016

## OUR MISSION

The Midlands Mentoring Partnership (MMP) is a backbone organization that seeks to increase the number and quality of mentoring opportunities available for youth.

## OUR VISION

To bring about community-wide, systemic change that will allow mentoring programs to serve more youth with quality services.

## PARTNER AGENCIES

Big Brothers Big Sisters of the Midlands

Bike Union Mentoring Project

Girls Inc. of Omaha

Hope Center for Kids

Kent Bellows Mentoring Program at Joslyn Art Museum

Kids Can Community Center

Ollie Webb Center, Inc.

Partnership 4 Kids

Release Ministries

TeamMates Mentoring Program

YMCA Reach & Rise

Youth Emergency Services

100 Black Men of Omaha

# YOUNG LIVES TRANSFORMED

## Harnessing the power of mentoring through collective impact

Mentoring is one of a community's most powerful tools for elevating the behavior, academic performance and aspirations of youth. It harnesses precious volunteer time to achieve a measurable impact on the path of young lives.

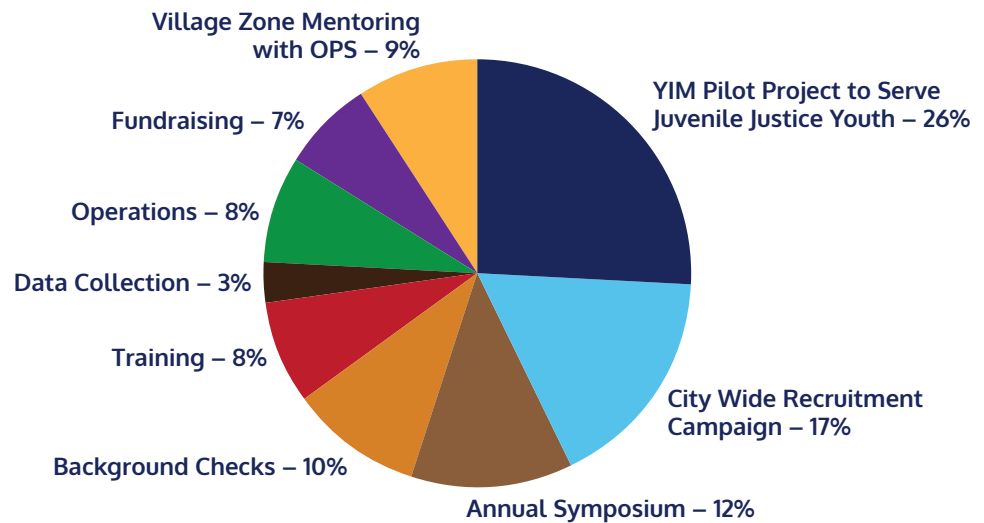
Through the Midlands Mentoring Partnership, our partner agencies are able to be more effective in serving youth and more efficient in utilizing donor contributions. We collaborate to identify best practices, collect and analyze data across agencies, and share tasks common to all to be more cost-effective.

Our mission of collective impact provides the essential infrastructure required by all mentoring agencies. By collaborating on common elements, our partner agencies are able to focus on their core missions; matching mentors to youth.

## FUNDING & OPERATIONS

<b>Support &amp; Revenues</b>	<b>\$511,692</b>
<b>Expenses</b>	<b>\$515,178</b>
<b>Net Assets, end of year</b>	<b>\$215,935</b>

## HOW WE SPEND YOUR CHARITABLE INVESTMENT



Data from MMP FY16 audit prepared by Seim Johnson, LLP

# MENTORING BY THE NUMBERS

**8:1** 

8:1 – Ratio of societal benefits to Nebraska per dollar invested in mentoring

2016 study commissioned by MMP

**70** 

70 – At risk youth matched to date through Youth Initiated Mentoring Pilot Project for Juvenile Justice Youth

**40%** 

40% – Youth who were matched during the first year of the Village Zone Mentoring Project with OPS and Empowerment Network

**200**



Mentors and mentoring professionals trained by MMP in 2016

**24%** 

24% – Increase over last year in number of mentors recruited through Mentor Recruitment Campaign

**\$39.<sup>93</sup>**



Average cost for 1,085 background checks performed in 2016 for our partner agencies

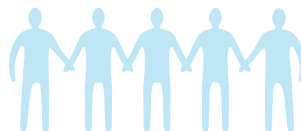
**139%**

Increase in number of foster care youth served by partner agencies since 2012



**78%**

Increase in number of matches across MMP partner agencies since 2011



**153%**

Increase in number of juvenile justice youth served by MMP partner agencies since 2011



MMP is recognized as a Best Practice Partner through the Nonprofit Association of the Midlands and is a 2016 recipient of the Better Business Bureau's Integrity Award



## MMP BOARD

**Josh Barte**, Board President  
CEO, Enterprise Bank

**John Ewing**, Board Vice President  
Douglas County Treasurer

**Kathy Clark**, Board Treasurer  
CFO, FBG Services

**Chris Rodgers**, Board Secretary  
Douglas County Board of  
Commissioners

**Jeremy Christensen**  
Attorney, Baird Holm

**Vernon Daniels**  
Judge, Juvenile Court of  
Douglas County

**Greg Gonzalez**  
Deputy Police Chief, Omaha  
Police Department

**Julie Hefflinger**, Past Board President  
Community Volunteer

**Kevin Langin**  
Sr. Director, Corporate Communications  
First National Bank

**Kenny McMorris**  
CEO, Charles Drew Health Center

**Ashley Robinson**, Past Board President  
Associate General Counsel,  
University of Nebraska

**Carol Russell**  
Community Volunteer

**Rick Spellman**,  
General Counsel, UNMC

**Jay Warren-Teamer**  
Community Affairs Coordinator,  
Mutual of Omaha

---

## MMP STAFF

**Deborah Neary**  
Executive Director

**Whitney Mastin**  
Director of Operations

**Teresa Riesberg**  
Operations and Events Coordinator

**Emily Wilson**  
Youth Initiated Mentoring  
Project Coordinator

## MIDLANDS MENTORING PARTNERSHIP

115 S. 49th Avenue | Omaha, NE 68132 | 402.715.4175

info@mmpomaha.org | [mmpomaha.org](http://mmpomaha.org)



THANK YOU to our partners,  
funders and mentoring programs  
for their help in promoting  
excellence in mentoring for  
our Omaha youth

## OUR PARTNERS IN CHANGE

Blue Cross Blue Shield of Nebraska  
City of Omaha, Mayor Jean Stothert  
Creighton University  
Douglas County, Community Based Aid  
Greater Omaha Chamber of Commerce  
Holland Foundation  
KETV  
Lamar Outdoor Advertising  
Lozier Foundation  
Mammel Family Foundation  
Metropolitan Community College  
Millard Foundation  
Mutual of Omaha Foundation  
Omaha Community Foundation  
Omaha Schools Foundation  
Peter Kiewit Foundation  
Peter Kiewit Sons', Inc.  
Phillip & Terri Schragger Foundation  
The Sherwood Foundation  
Paul & Annette Smith  
Valmont Industries  
Weitz Family Foundation  
William & Ruth Scott Foundation